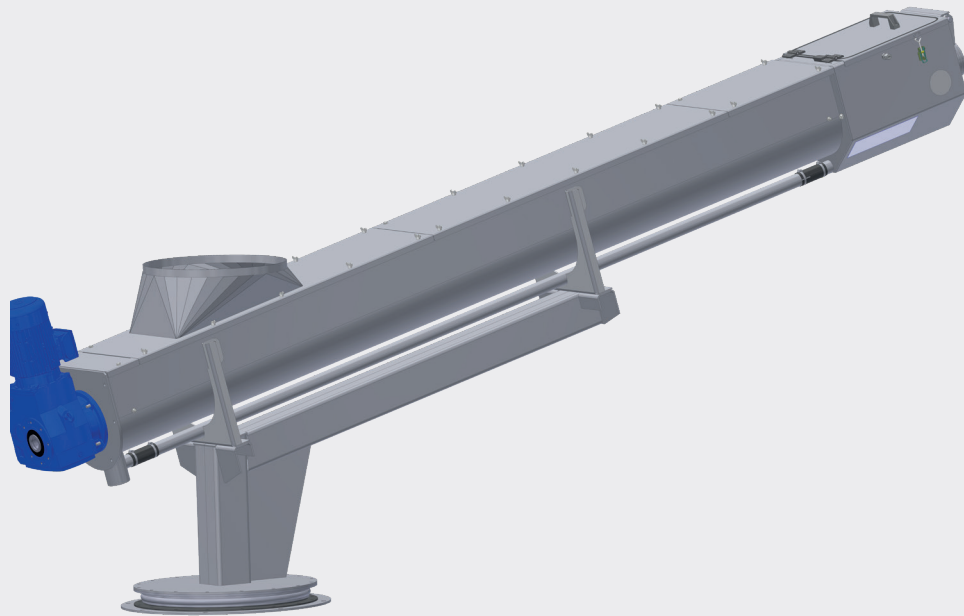


# ENVIROPAK

SHAFT SCREW COMPACTOR



FOR CONVEYING, COMPACTING  
AND DEWATERING SOLID  
WASTE FROM ALL AVAILABLE  
SOLID/LIQUID SEPARATION  
TECHNOLOGIES

## DESCRIPTION / OPERATION

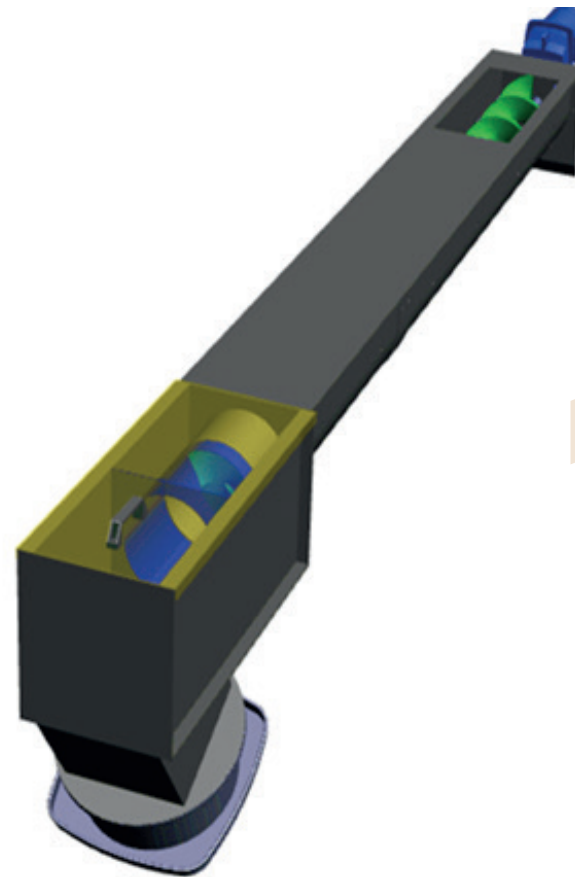
The shaftless screw compactor Enviropac insures conveying, compacting and dewatering functions of the solid waste from all available solid/liquid separation technologies.

With a custom made hopper, the shaftless screw compactor gathers the solid waste from the screening or filtration systems.

The solid waste are conveyed to wards a compacting section with a shaftless screw conveyor, where they are compressed in order to reduce their volume and insure dewatering process.

A counter-pressure device at the end increases the overall performance of the unit.

Solid waste are discharged into a container or conditioned in a continuous plastic bagging system.



## SPECIFICITIES

Solid waste volume reduction up to 50%

Easy installation

Small footprint

Easy maintenance

Low maintenance costs

Reliability and durability

### TROUGH

The shaftless screw compactors Enviroscrew include closed trough with «U» shape insuring CIP (Clean In Place) conditions with odours limitation

### SCREW

The shaftless screw is manufactured in special hard steel and lay on a PEHD protection. Rotation speed is set according to each application. The screw is maintained in its axis thanks to the trough shape.

### COMPACTING ZONE

The compacting grid is designed with two dewatering steps. First step is insuring positioning and centering in its axis. It is designed with stainless steel perforated plate with larger openings than the second step with slotted plate, allowing a pre-dewatering before the ultimate pressure step for a proper solid waste dewatering.

### DRAINAGE ZONE

At the screw bottom, a drainage zone option can be fitted in order to collect the water extracted from the solid waste, especially when the unit is installed inclined..

## MATERIAL

Construction in stainless steel 304L or 316L  
Screw in special steel high resistance

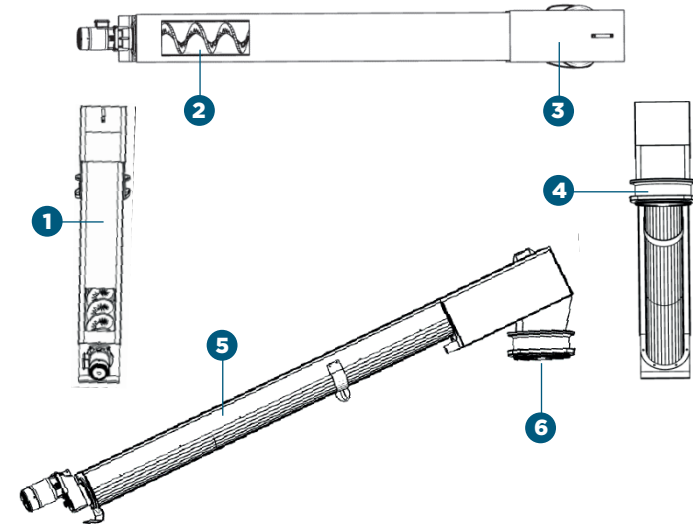
## PERFORMANCES

Dadas	Models		
	EVP 200	EVP 250	EVP 300
Flow rate (m <sup>3</sup> /h)	2	4	7
Installed power (Kwh)	1,5	2,2	3

*For larger units, please consult us*

## LAY-OUT

- 1 Covers
- 2 Shaftless screw
- 3 Compacting zone
- 4 Bagging unit
- 5 Product inlet
- 6 Product outlet



## DIMENSIONS

Models	Length in mm				Width	Height <sup>(2)</sup>
	Drainage	Conveying (Mini)	Conveying (Maxi <sup>(1)</sup> )	Compacting		
<b>EPS 200</b>	200	500	6 000	490	480	600
<b>EPS 250</b>	250	500	7 000	600	530	650
<b>EPS 300</b>	300	500	8 000	770	580	700

<sup>(1)</sup> Recommended

<sup>(2)</sup> Without discharge and bagging unit

A STEP AHEAD IN WATER TECHNOLOGY

[sfa-enviro.com](http://sfa-enviro.com)

 [@sfa\\_enviro](https://twitter.com/sfa_enviro)

