

SCREENING -
SIEVING



ENVIROSCREEN

SHAFTLESS SCREW SCREENING



SCREW SCREENING
FOR GRAVITY INSTALLATION
OR PUMP DISCHARGE

 Enviroscreens

DESCRIPTION / OPERATION

The Enviroscreen series SRS using shaftless screw is particularly adapted to project where effluent is delivered by gravity. The unit insures screening and conveying of waste.

However, to match with specific applications or installations, it is possible to add a compacting zone for dewatering the waste (model SRS/P).

There is also a built-in tank version, for pump discharge operation (SRS/CP series).

The effluent is flowing through the filtration grid where solid waste is stopped and removed under the action of the conveying shaftless screw towards the upper part to be discharged. Up to 1000 m³/h can be processed per unit.



SPECIFICITIES

- Easy installation and maintenance
- Small footprint
- Proven technology
- Low maintenance costs
- Reliability and durability

SCREENING

The effluent is processed through the cylindric filtration grid. Due to such design, the effective filtration area is much larger compare to flat screening technology. Therefore, the ratio between size/flow allows to reduce the overall dimensions of the unit. Brushes are fixed onto the shaftless screw in order to keep the filtration zone clean and flow efficient by rotation during operation.

CONVEYING

The screw is extended to the conveying zone and then to the compacting zone before solid waste discharge.

WASHING RAMP

In order to reduce the organic content present in the solid waste, washing ramps can be installed at the screening and conveying zones.

DISCHARGE

The waste is conveyed towards the upper part of the machine towards the discharge zone, the position of which is defined by the length of the conveying zone adapted to the lay-out.

WASTE

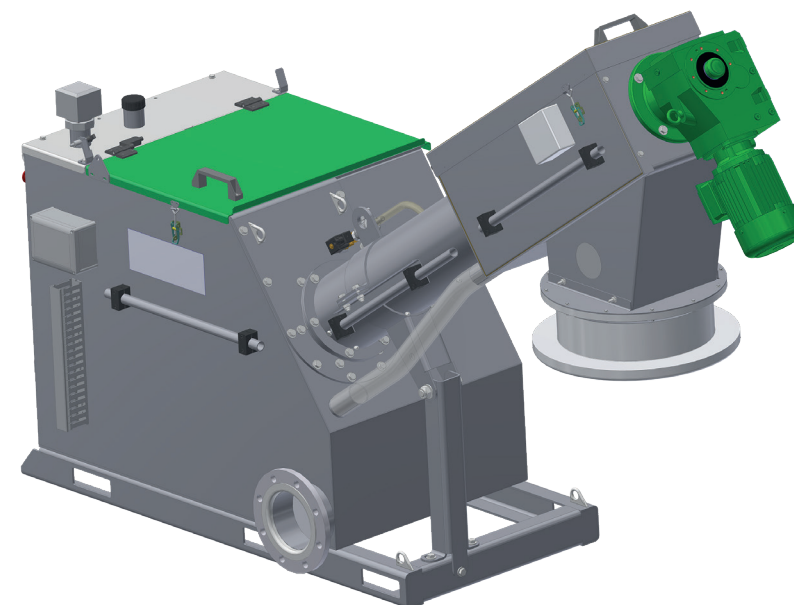
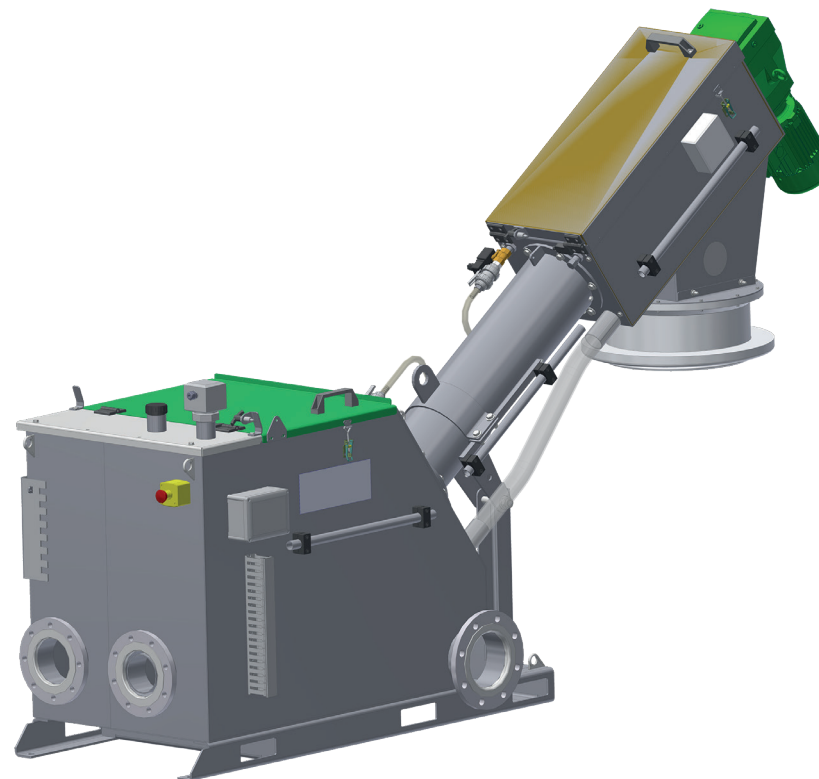
The screening waste can be either discharged directly into containers or conditioned in continuous closed plastic bagging unit.

MATERIAL

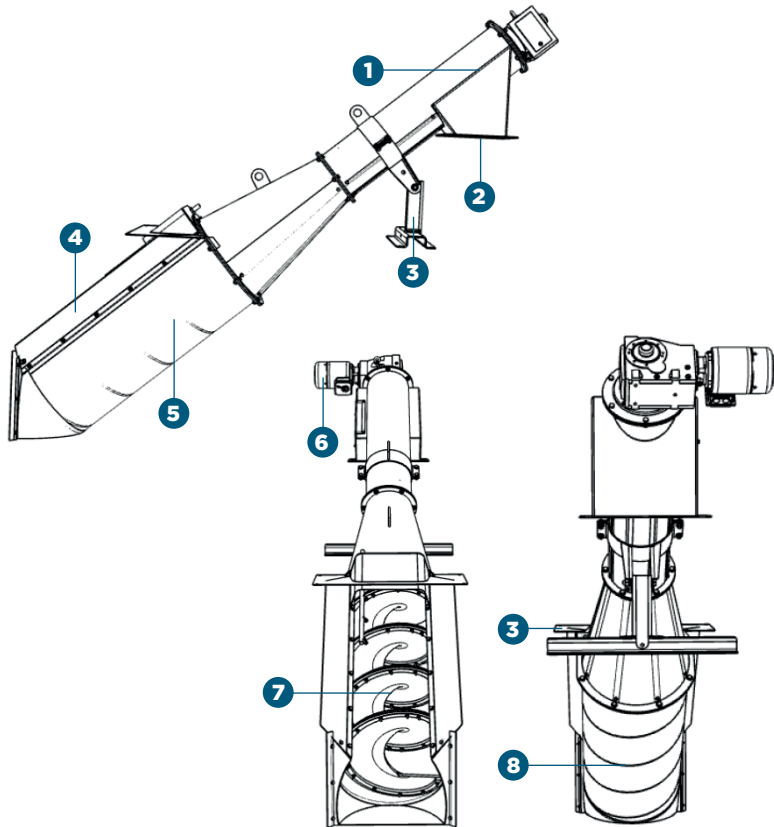
Construction in stainless steel 304L or 316L
Screw in special steel high resistance

PERFORMANCES

Mesh (mm)	Hydraulic flow rates with urban effluent (m ³ /h)				
	SRS 200	SRS 300	SRS 400	SRS 500	SRS 680
0,75	38	76	121	192	359
1	47	94	149	237	443
2	68	136	215	342	638
3	55	110	174	277	517
6	68	136	215	342	638
10	84	168	266	422	788

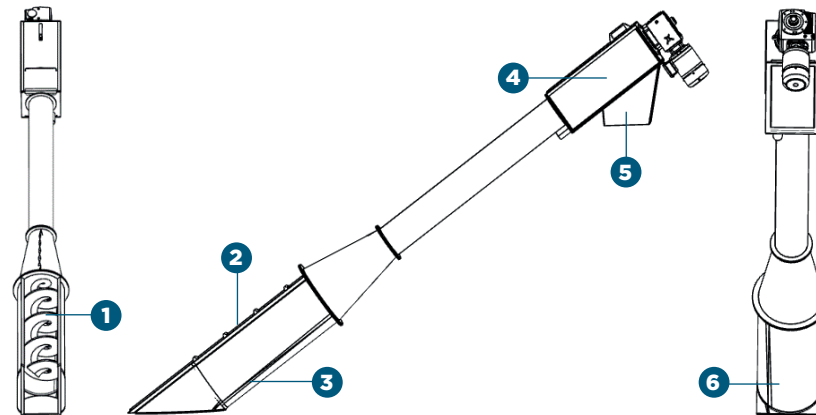


LAY-OUTS



- 1 Discharge zone
- 2 Dry waste outlet
- 3 Fixing supports
- 4 Effluent inlet
- 5 Effluent outlet
- 6 Motorisation
- 7 Shaftless screw fitted with brush
- 8 Filtration screen

WITH SHAFTLESS SCREW



- 1 Shaftless screw with brushes
- 2 Effluent inlet
- 3 Effluent outlet
- 4 Compacting zone
- 5 Solid waste
- 6 Filtration screen

OPTION : IN CHANNEL SCREENING – COMPACTING UNIT WITH SHAFTLESS SCREW SRS/P



DIMENSIONS

	Overall dimensions in mm							
Models	SRS 200/300 / P		SRS 400 / P		SRS 500 / P		SRS 680 / P	
Dimensions	Mini	Maxi	Mini	Maxi	Mini	Maxi	Mini	Maxi
Unit length	2500	9000	3000	9000	3000	9000	3000	9000
Footprint	2048	7372	2457	7372	2457	7372	2457	7372
Height	1434	5162	1721	5162	1721	5162	1721	5162
Width	250 / 350*		450		550		750	

*350 with shaftless screw SRS/P

A STEP AHEAD IN WATER TECHNOLOGY

sfa-enviro.com

 [@sfa_enviro](https://twitter.com/sfa_enviro)

