

A large, abstract graphic of a water drop on the left side of the page. It is composed of a network of glowing blue and green lines forming a wireframe sphere, with a bright green glow at the top and bottom. The background is a dark blue gradient with a diagonal split into a lighter blue section on the right.

# A STEP AHEAD IN WATER TECHNOLOGY

 Europelec

 Aquaturbo

 Enviroline

# SFA ENVIRO, THE ENVIRONMENTAL DIVISION OF THE SFA GROUP

A PORTFOLIO OF LEADING BRANDS SUCH AS EUROPELEC AND AQUATURBO.

A historical core business in Municipal and Industrial wastewater treatment equipment with our DNA focused on the aeration process.

A strong international growth strategy over all continents.

A range of solutions constantly expanding through R&D and technological partnerships.

SFA enviro can supply a complete range of equipment for wastewater treatment plants

- from pre-treatment to sludge management
- including the infrastructure elements
- including the infrastructure elements inherent to these activities
- Rental and Service activity

A willingness to evolve towards new markets by progressively integrating solutions useful to other segments of the environment.





## summary

4

Our advantages  
Experience

5

The brands  
References  
Our team

6

Customer satisfaction

7

Company history  
Engineering & project management  
Environmental protection

8

Where are we?

9

A world-renowned group  
Inventiveness, a priority for the sfa group

10

Product ranges

23

Rental and Service

## OUR ADVANTAGES

INTERNATIONAL COVERAGE THROUGH ITS OFFICES AND SALES NETWORK  
THE FLEXIBILITY OF A SMALL COMPANY, THE STRENGTH OF A GROUP!  
MULTINATIONAL AND MULTILINGUAL TEAMS

**±100**  
Years of experience

## EXPERIENCE



### **The companies that make up the SFA enviro Division are:**

- Aquasystems International N.V., founded in 1975
- Europelec, founded in 1979
- Aquaturbo Systems Inc, founded in 1987

The R&D department at SFA enviro works in partnership with French and overseas higher education and research institutions.

The knowledge of our skilled workers, some of whom have more than 30 years of experience, is perpetuated through recruitment and training programs for apprentices in engineering trades.

### **SFA enviro values its knowledge and experience through :**

- Our own design office who designs our products intended for a worldwide use and in conformity with the applicable standards (Eurocodes, AWWA, FM...).

- Three manufacturing plants (Brégy, France; Halle; Belgium; Springdale, Arkansas, USA).
- A team of engineers in charge of projects who ensure the follow-up and the technical management of the projects, from design to commissioning.
- Our own test basins
- Experienced supervisors and technicians for the installation of all our equipment in compliance with technical and regulatory constraints.
- Management of a fleet of equipment dedicated to rental.
- A reliable and reactive after-sales service.
- Thousands of references throughout the world.

## SFA ENVIRO THE BRANDS



Europelec®  
Aquaturbo™

Aerospeed®  
Aerostream®  
Aircomb®  
Aquafer®  
Aquadecant®  
Aquaeromix®  
Aquadisc®  
Aquafloat®  
Aquatube®  
Euromix®  
Noemi®  
ScrewPELLER®  
Sofie®  
TLF®

## REFERENCES



Equipment in service throughout the world for more than 45 years.

References in various industrial sectors:

- meat processing
- dairy
- pulp and paper
- mining
- cereal and brewery
- oil and gas
- pharmaceutical
- sugar
- fish breeding and farming
- energy production
- waste treatment...

Numerous references in Municipal Wastewater treatment worldwide.

## OUR TEAM



- Multicultural and multilingual teams
- Our teams are made up of Engineers, Technicians and Specialized Workers, spread over Asia, Europe, South America, and the United States
- SFA enviro has built a large network of highly skilled technical and commercial partners.



# CUSTOMER SATISFACTION



## OUR COMMITMENTS

- SFA enviro gathers the expertise of leading companies in their field
- The availability and reactivity of our teams of engineers and technicians
- The proficiency in manufacturing processes
- After-sales service and Customer Support
- Significant knowledge and experience of our production teams

## QUALITY

Manufacturer for more than 47 years, SFA enviro is now offering its wastewater treatment equipment worldwide.

### 1 / MASTERY AND CONTROL OF PRODUCTION

SFA enviro controls the manufacturing of all its components and equipment. Subcontractors components are controlled using quality plans that ensure the homogeneity and traceability of the parts leaving their factories.

The control of the manufacturing of essential components for the operation of SFA enviro equipment allows us to guarantee a constant and high level of quality in production.

## SAFETY

SFA enviro considers safety to be a priority and regularly organizes training for its employees to make them aware of safety on the worksites (risk assessment, method declarations to cover work in confined spaces, deep tanks, etc.), certifications or authorizations (work at height, etc.).

### 2 / QUALITY MATERIALS AND COMPONENTS

All our product ranges have been designed using materials and components that ensure the durability and reliability of our equipment. All our stainless and carbon steels are of European or American origin. Certificates of origin can be provided upon request. All our plastics and polymers are recyclable. We select motors from the most renowned manufacturers and have them adapted to meet extremely high specifications.

### 3 / TESTED PRODUCTS, CONSTANTLY IMPROVED

During the development phases, the performance of all our aeration equipment is assembled and then tested, first in our laboratories, then in partnership with INRAE in France (National Research Institute for Agriculture, Food and the Environment) according to the EN 12255 quality standard. The company has its own tanks and test facilities to test the performance and oxygenation capacity of its equipment.



# COMPANY HISTORY

|   |   |  |  |   |   |  |
|---|---|--|--|---|---|--|
| <b>2022</b><br>Creation of the SFA enviro division regrouping Europelec, Aquasystems International and Aquaturbo™ Systems<br><br>Modernization plan of the American workshop Aquaturbo™ Systems Inc. and extension of the French production site Europelec<br><br>Integration of pre-treatment and Sludge Management solutions into its product range | <b>2019</b><br>Acquisition of Aquasystems International NV and Aquaturbo™ Systems Inc. by the SFA Group<br><br><b>2018</b><br>Modernization of the Europelec production facility in Brégy | <b>1995</b><br>First manufacturing site in Arkansas, United States of America<br><br><b>1987</b><br>Founding of Aquaturbo Systems Inc. in the United States of America | <b>1985</b><br>Aquasystems becomes Aquasystems International NV<br><br><b>1984</b><br>Launch of the high speed aerator Aquaturbo™ AER-AS and its SCREWPELLER® technology | Takeover of the company Fenwick Ecology by Europelec which thus integrates in its product range the low speed surface aerator TLF making the success of Europelec<br><br><b>1982</b><br>SFA Air Aile process and engineering activities are | acquired by Wangner Assainissement, the equipment manufacturing activity is transferred to Europelec<br><br><b>1979</b><br>Creation of the Europelec company, who initially manufactured motors for the SFA group | <b>1975</b><br>Founding of Aquasystems International BVDA specialised in waste water treatment equipment<br><br><b>1958</b><br>Creation of SFA Air Aile, a company specializing in water treatment engineering and process |
|---|---|--|--|---|---|--|

## ENGINEERING & PROJECT MANAGEMENT



The engineers in charge of projects are specifically assigned to accompany you throughout the duration of your project.

Their knowledge and proficiency in Cad-Solidworks Software are assets to define and validate the overall design and specifications related to your project.

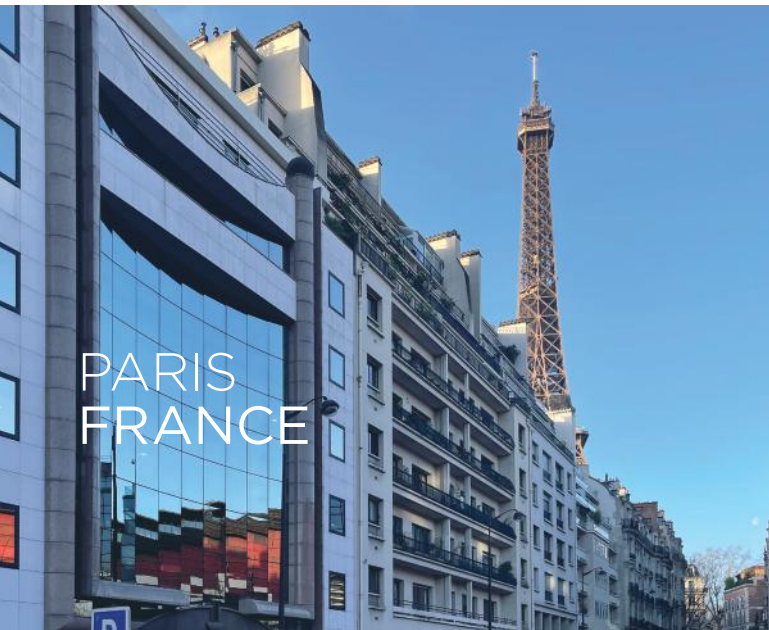
Also trained in Project Management, your project manager follows up the production, delivery, and installation of your equipment.

SFA enviro's R&D department also works on the constant improvement of existing products, often in partnership with higher education and research institutions.

## ENVIRONMENTAL PROTECTION



ENVIRONMENTAL PROTECTION IS AT THE HEART OF SFA ENVIRO'S ACTIVITY. TO GO FURTHER IN THE PROTECTION OF THE ENVIRONMENT, SFA ENVIRO USES RECYCLABLE MATERIALS (STAINLESS STEEL, POLYPROPYLENE, HDPE, EPDM, ETC.) IN THE DESIGN AND MANUFACTURE OF ITS PRODUCTS. THE CONSTANT SEARCH TO IMPROVE THE EFFICIENCY OF THE AERATION DEVICES ALSO CONTRIBUTES TO REDUCE THE ENERGY CONSUMPTION RELATED TO WATER TREATMENT AND THUS TO PROTECT THE ENVIRONMENT.



PARIS  
FRANCE

## WHERE ARE WE ?

### LOCATIONS

Offices and workshops in Paris (France), Manchester (UK), Brussels (Belgium), Springdale (Arkansas-Usa) and Ho Chi Minh-City (Vietnam).

SFA enviro's headquarters are located in the center of Paris. The company has Sales Offices and production sites in the United States, the United Kingdom, Vietnam, Belgium, and France: production, sales, and engineering in Springdale (Arkansas-USA), production in Brégy (Oise-France), production, sales and engineering in Halle (Belgium), sales and engineering in Paris (France), sales in Manchester (United Kingdom) and Ho Chi Minh-City (Vietnam).

## MANCHESTER UNITED KINGDOM



ARKANSAS  
USA

## HO CHI MINH-CITY VIETNAM



## BRUSSELS BELGIUM





## A WORLD-RENOWNED GROUP INVENTIVENESS, A PRIORITY FOR THE SFA GROUP

- The **SFA Group** has specialised in the design and manufacture of wastewater treatment equipment since its inception. Mainly known for having revolutionised the sanitary equipment market - with the creation in 1958 - of the toilet macerator, the group has never ceased to develop - through Europelec - innovative industrial solutions for Municipal and Industrial wastewater treatment plants. The diversity of the solutions offered by the **SFA Group**, both in the world of sanitaryware and in the world of industrial and municipal wastewater treatment or lifting installations, makes the group one of the world leaders in the sanitaryware industry. With more than 1,000 employees worldwide, the **SFA Group** currently has subsidiaries in twenty-seven countries.
- Since its foundation, the **SFA Group** has been constantly looking to the future and reinventing itself. Water and its Treatment and use are central to everyone's daily life. Innovation, industrial research, respect for the environment and customer service are the key values we share. The **SFA Group** is committed to offering high performance and quality products manufactured in Europe and the USA. Our goal is to offer you a constant high-quality service.

# PRODUCT RANGES

*Screening - Sieving*  
*Waste management*  
*Mixing*  
*Foam control*  
*Surface aerators*  
*Submersible aerators*  
*Diffused air*  
*Decantation*  
*Metal construction*  
*Sludge management*

 Europelec

 Aquaturbo

 Enviroline

*Screening - Sieving*

ENVIROSTRAP



VERTICAL BAR SCREEN

*Screening - Sieving*

ENVIROBAR



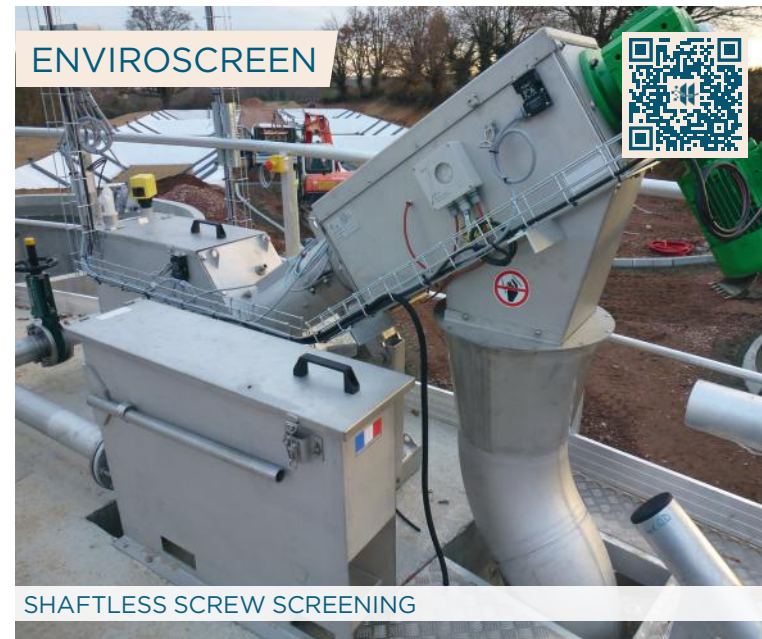
VERTICAL BAR SCREEN



Screening - Sieving



Screening - Sieving



Screening - Sieving



Screening - Sieving



Screening - Sieving



Screening - Sieving



Screening - Sieving





*Screening - Sieving*

ENVIROCURVE



MEDIUM TO COARSE SCREENING

*Screening sieving*

DEGREASER



GRIT AND GREASE REMOVAL SYSTEM

*Waste management*

ENVIROCOMPACT



SHAFT SCREW COMPACTOR

*Waste management*

ENVIROPAK



SHAFTLESS SCREW COMPACTOR

Waste management

SANDVIRODRIP



SAND CLASSIFIER

Waste management

ENVIROLIFT



WATER LIFTING

Mixing

EUROMIX®



FLOATING DOWNDRAFT MIXER

Mixing

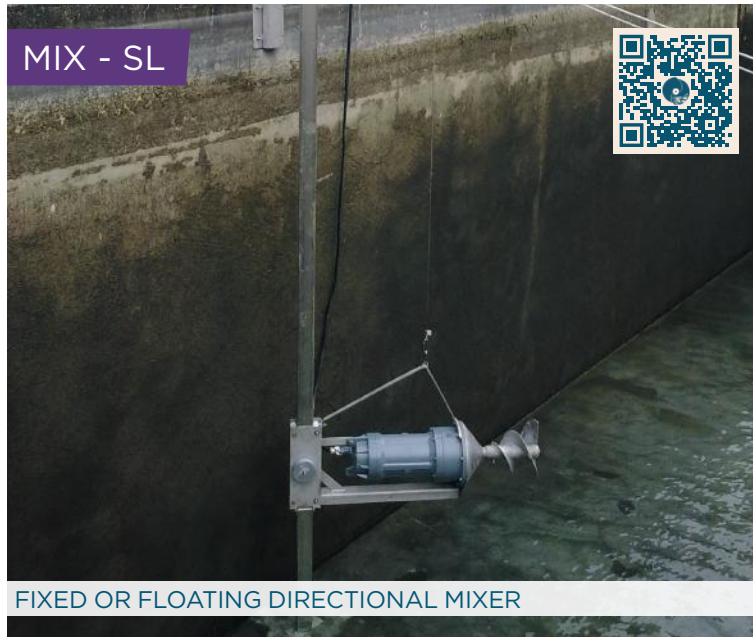
MIX - AS



FLOATING DOWNDRAFT MIXER



*Mixing*



*Mixing*



*Foam control*



*Foam control*





Foam control



Surface aerators



Surface aerators



Surface aerators





Surface aerators



Surface aerators



Surface aerators



Submersible aerators





*Submersible aerators*



*Submersible aerators*



*Submersible aerators*



*Bridged / tower mounted or submersible aerators*





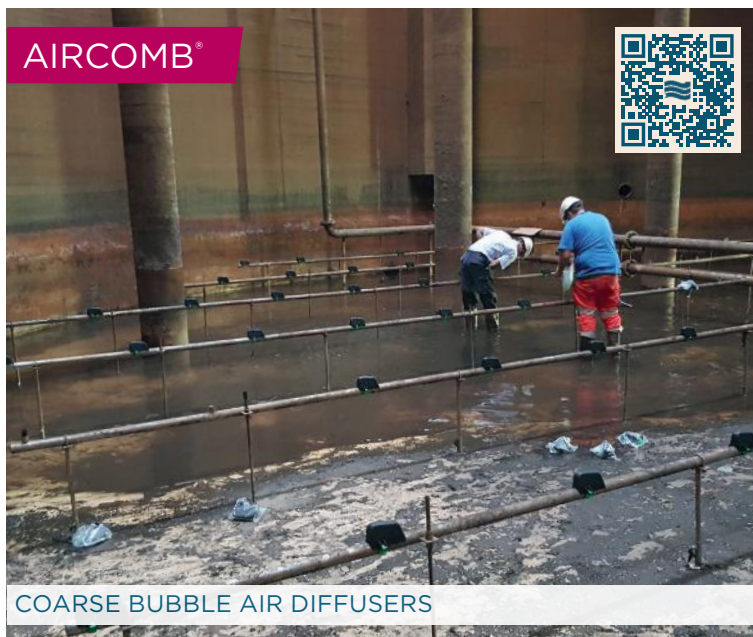
*Submersible aerators*



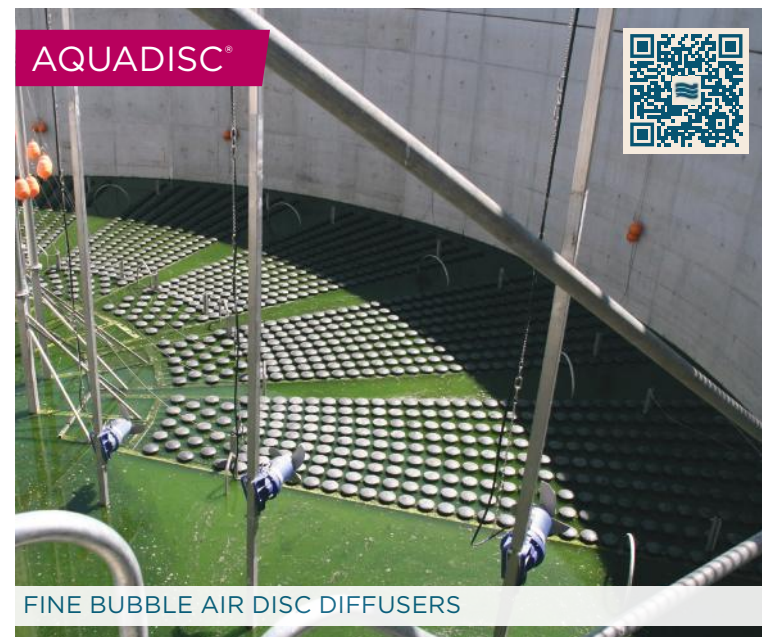
*Diffused air*



*Diffused air*

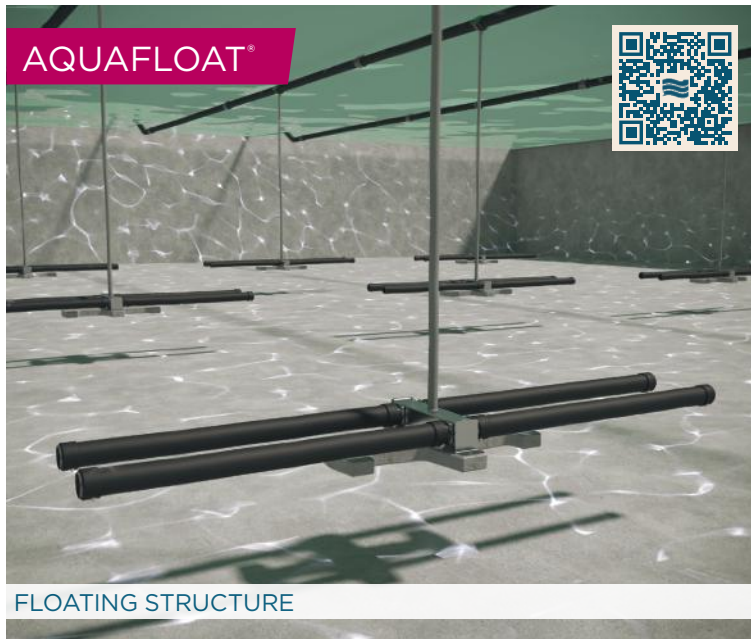


*Diffused air*

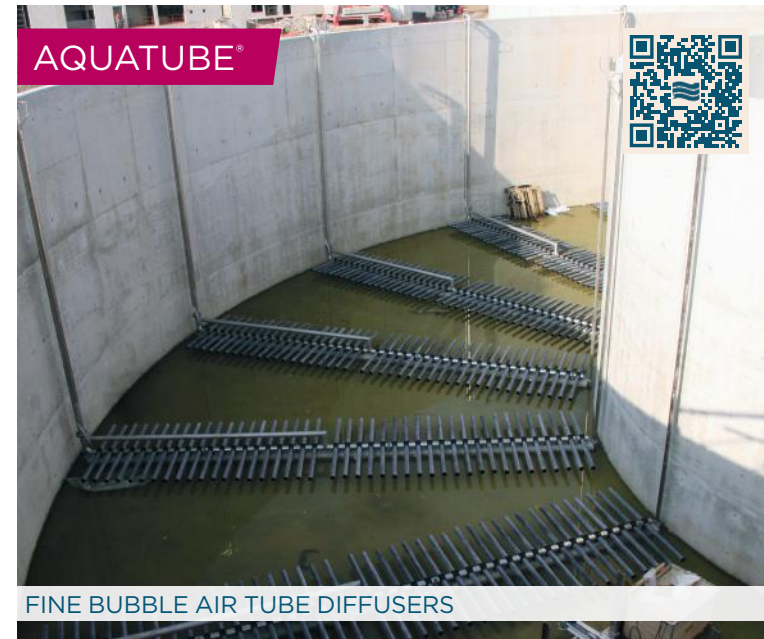




*Diffused air*



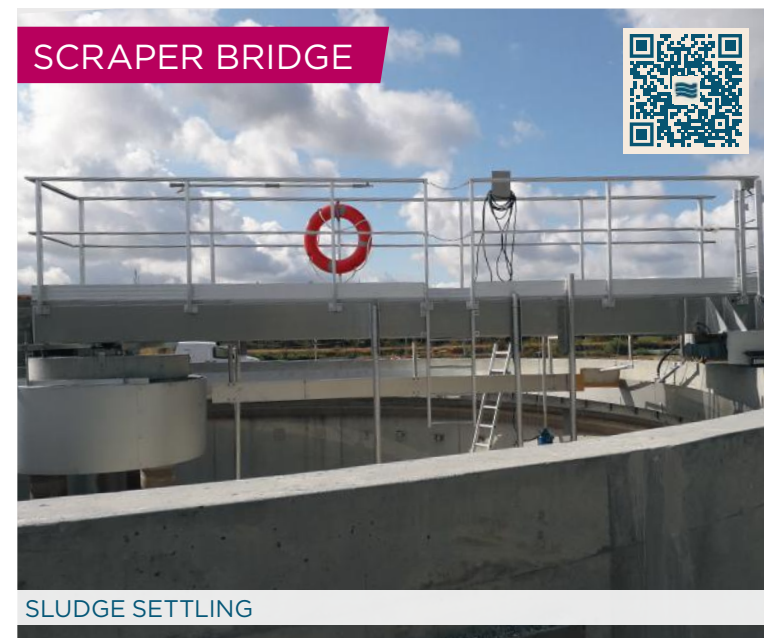
*Diffused air*



*Diffused Air*



*Settling and decanting*





*Settling and decanting*



*Settling and decanting*



*Metal construction*



*Sludge management*



*Sludge management*

ENVIROCONVEY



SHAFTLESS SCREW CONVEYOR

*Sludge management*

ENVIRODUO



MULTIPLE SCREWS CONVEYOR / EXTRACTOR

*Sludge management*

ENVIROMULTI



STORAGE AND EXTRACTION SILO

*Sludge management*

ENVIROKNEAD



LIMING



## RENTAL



Aeration in wastewater treatment plants is an essential step in water treatment, which cannot be stopped for long periods of time at the risk of the biology.

SFA enviro has a fleet of more than a two hundred machines and is able to position its equipment anywhere in Europe / USA within 24/48 hours.

Back-up solution, temporary increase of the load on the treatment plant, test before purchase or simply a choosing OPEX rather than CAPEX, renting from SFA enviro is the solution.



## SERVICE



### Expert guidance during installation and commissioning

The installation and commissioning of a water treatment equipment often requires the expertise and advice of a specialist. SFA enviro accompanies you during the installation or commissioning and thus ensures a long-lasting use of its equipment.

### Repair and maintenance by the manufacturer

Depending on the nature of the repair or maintenance to be carried out, SFA enviro's technical teams intervene on site or in the workshop and ensure that the work is carried out according to the rules of the trade.

### Spare parts and motors to SFA enviro standards

SFA enviro equipment and components are specially designed for intensive use in harsh environments. Working with manufacturer's parts and motors according to SFA enviro specifications allows you to extend the life of your equipment.



A STEP AHEAD IN WATER TECHNOLOGY

[sfa-enviro.com](http://sfa-enviro.com)

