



**SFA enviro**  
SERVICES  
& RENTAL





# SUMMARY

4 | Where are the SFA enviro machines available for rent?  
Europelec equipment rental fleet

5 | SFA enviro services

6 | Some good reasons to rent your equipment

7 | Product ranges

21 | Other equipment for rent

22 | Spare parts

24 | Workshop

## WHERE ARE THE SFA ENVIRO FLEET OF MACHINES AVAILABLE FOR RENT?

### Factories

**AQUASYSTEMS  
INTERNATION N.V.**  
508, Chaussée de Bruxelles  
B-1500 Hal • Belgium

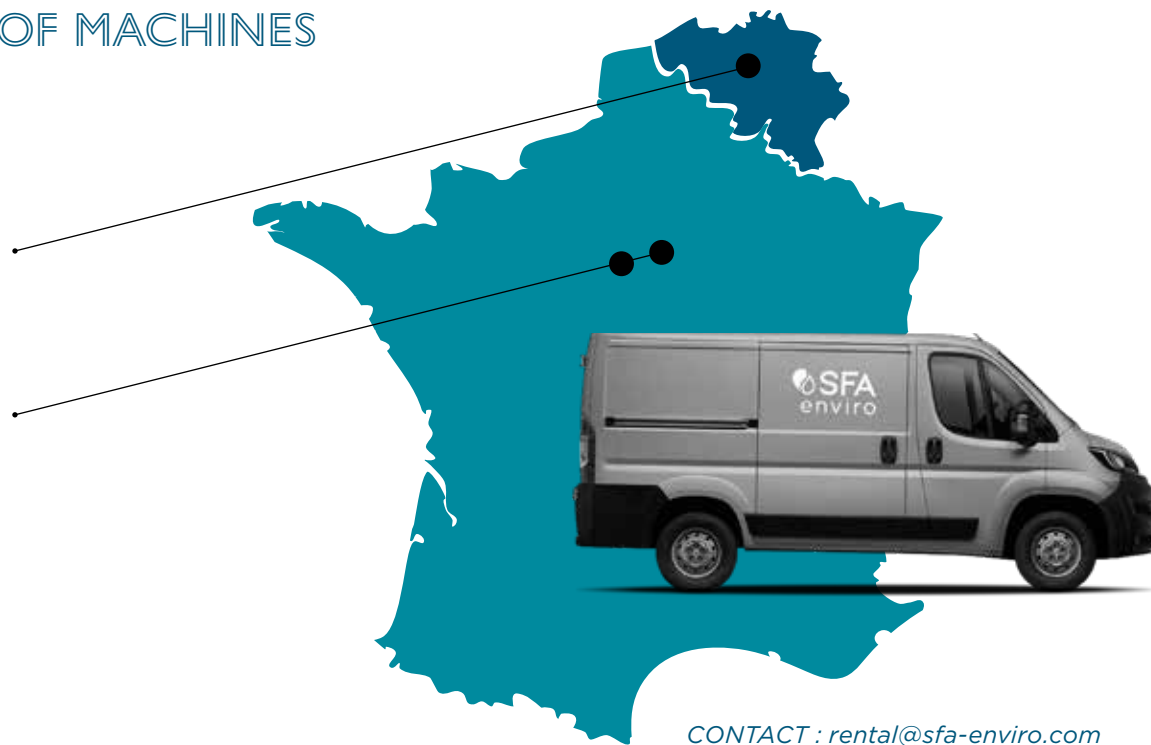


**EUROPELEC**  
Route de Chèvreville  
60440 BRÉGY • France



### Head office

**SFA ENVIRO**  
209 rue de l'université  
75007 PARIS • France



CONTACT : [rental@sfa-enviro.com](mailto:rental@sfa-enviro.com)

## SFA ENVIRO EQUIPMENT RENTAL FLEET

A constantly evolving  
**rental fleet** made up of  
more than **150 machine**

Types of equipment  
availables :

- **Surface aerators & agitators (on float) or submerged**
- **Other specific equipment for wastewater treatment plants**

**More than 60 years of combined experience in water treatment, allowing us to fully support our customers in defining their needs in order to provide a reliable, fast and efficient solution**

On site delivery in metropolitan France and in Europe within **24 to 72 hours** (depending on the destination)

The know-how of our **Research & Development department** allows us to own a rental fleet resulting from a **100% French design**

# SFA ENVIRO SERVICES



## RENTAL OF AERATION AND MIXING EQUIPMENT

A fleet of machines available to customers to meet any urgent need for aeration and / or mixing in the following cases:

- A scheduled maintenance operation or a machine failure at a wastewater treatment plant requiring the need of an emergency solution
- An increase in the need for oxygen in the summer period
- Odor issues to be solved
- A seasonal activity requiring periodic treatment of effluents only for a few weeks or months in the year.



## INSTALLATION AND COMISSIONING

Our technicians have all the expertise and authorizations required to work on your sites.

Installation or commissioning assistance is a key factor for the proper functioning of the equipment.

All adjustments and checks are important, especially with regard to electrical cabinets, accessories, fixings, direction of rotation, operation and performance.



## MAINTENANCE, BREAKDOWN SERVICE

In an emergency, you can call on our intervention teams specializing in the diagnosis and repair of water treatment plant equipment.



## SPARE PARTS SERVICE

A large storage space at our Brégy plant allows us to respond to all your spare parts needs within a very short time.

## SOME GOOD REASONS TO RENT YOUR EQUIPMENT

### **EMERGENCY SOLUTION TO A MACHINE FAILURE**

More flexible than buying, leasing allows, in the event of equipment failure, to have an immediate replacement solution during the period of repair or replacement of the equipment.

### **PRESERVING YOUR CASH FLOW AND REMAIN MORE FLEXIBLE**

Renting offers the possibility of keeping one's own funds to finance more productive activities. In tough economic times, businesses don't have to release a lot of money. They can smooth their investments over several months. In the event of a decline in activity, all or part of the equipment can be returned to remain in line with the level of production.

### **TESTING BEFORE INVESTING**

Renting also allows in some cases to be able to test the technology and the equipment before investing.

### **OPTIMIZING THE LEVEL OF USE OF EQUIPMENT**

Equipment ownership can become onerous when the equipment is not used 100% of the time. In period of overactivity, it may be better to rent rather than invest. Renting is even more interesting in the event of seasonal activity where the effluents only need to be treated a few months in the year.

### **HAVING THE GUARANTEE TO BENEFIT FROM REVISED AND RELIABLE EQUIPMENT**

Renting your business equipment allows you to benefit from a certain flexibility in the management of your equipment and to fight against obsolescence. Over the course of the contracts, the equipment is tested and revised in order to be always operational.

### **GETTING RID OF MAINTENANCE COSTS**

Rental agreements include full maintenance of the equipment. The user therefore does not need a repair workshop, spare parts stock, mechanics or even having to manage maintenance contracts. When the rented equipment breaks down, it is replaced or repaired at no cost to the user.

### **GETTING TO A BETTER COST CONTROL**

Knowing the exact cost of the equipment in its possession is difficult to determine. Acquisition, repair, maintenance, transportation and installation costs are just a few of the variables. Renting your equipment ensures perfect traceability of its costs.

### **A FINANCIAL ASSET**

No VAT is payable on the price of material and capital is not tied up. The rents are part of operating expenses and are not included in the balance sheet.



## PRODUCT RANGES

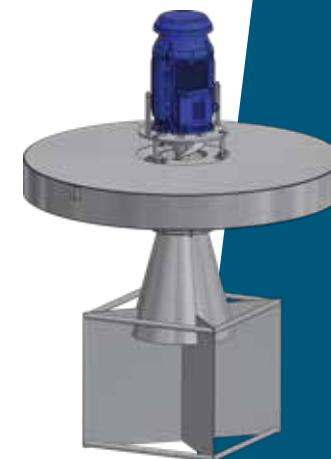
Surface aerator

AER-AS®

## FLOATING SURFACE AERATOR

Axial flow aerator with patented instantaneous radial discharge. World renowned for high aeration efficiency in field conditions due to maximum transfer of kinetic energy to water surface.

Installations range from small tanks to large lagoons due to high mixing and oxygen dispersion characteristic in the form of an apple shaped flow.



- **Excellent efficiency in wastewater**
- **Maintains the same O2 in efficiency over time**
- **Exceptional mixing and oxygen dispersion**
- **Adaptable to suit varied water levels**
- **Water level does not affect efficiency**
- **Suitable for various lagoons, tanks, or ditches; any shape or any size**
- **Suitable for fixed and variable speed frequency operation**
- **Unparalleled water-cooling capabilities – adjustable rate**
- **Minimal noise in operation**
- **Low-aerosol production and low-odour emission**
- **Ease of installation – Even whilst the plant remains online**
- **Minimal maintenance**
- **Simplicity of design and operation**
- **No gearbox, no submerged bearings, no mechanical seals, no blowers, no pipework, or valves**
- **Long service life – no consumable parts, no major wear surfaces**
- **100% stainless steel construction**

*Submersible aerator*

**AER-GS®**

## FIXED LOW-SPEED SUBMERSIBLE AERATOR/MIXER

Totally independent Aerator and Mixer. Air Provided by Blower with Variable Frequency Drive which can regulate oxygen supply from zero to maximum capacity; whilst retaining full mixing and oxygen dispersion capability therefore the units are ideal for SBR ASP & MBR applications.



- **Activated sludge + Aerobic Digestion**
- **Nitrification/Denitrification**
- **SBR + MBR - Oxygen Provision**
- **Also ideal for deep tanks up to 9m + high MLSS**
- **Independent Aeration + Mixing**
- **High oxygen transfer efficiency + dispersion**
- **Intensive low energy to volume mixing**
- **Non-clogging + minimal bubble coalescence**

*Submersible aerator*

**AER-SB®**

## FIXED SUBMERSIBLE AERATOR L=LONG AIR DISTRIBUTION CHANNELS OPTIONAL

As a floor mounted submersible aerator with intensive mixing action, it is ideal for deep tanks, existing pocket ASPs with moderate to high sludge concentrations and will re-suspend of settled sludge.



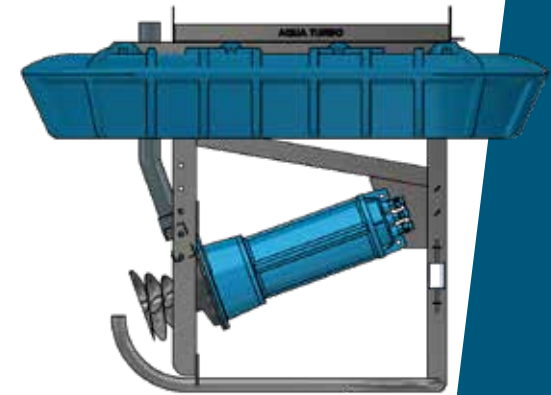
- ***Ideal for existing Activated-Sludge Processes***
- ***Ideal for Aerobic Digestion Processes***
- ***Also ideal for deep tanks with high MLSS***
- ***Self-aspirating***
- ***Intensive low energy to volume mixing***
- ***Low noise***
- ***Simple installation + removal***
- ***Can be installed without draining the tank or stopping the process***

Surface aerator

AER-SL®

## DIRECTIONAL FLOW AERATOR/MIXER

Aspirator Aerator featuring a unique impeller and vacuum chamber design drawing air below the water level and dispersing as fine to medium sizes Oxygen bubbles directly into waste water to provide directional flow.



- *Ideal for aeration and directional flow generation provided by every unit*
- *Directional Aeration + Mixing*
- *Used for Storage, Equalization, Lagoons, Shallow tanks*
- *Nitrification/Denitrification*
- *SBR Processors*
- *Independent Aeration + Mixing (Dual Speed Operation optional)*
- *Non-clogging Impeller + independent vacuum chamber design*
- *Robust + Compact Design – Minimal vibration*
- *Easy to Install & Remove from any tank or lagoon*

*Self aspirating bottom aerator*

## AEROSTREAM®

### SELF-ASPIRATING SUBMERGED HIGH SPEED AERATOR - AEROSTREAM® ALLOWING AERATION AND MIXING OF THE EFFLUENTS BY THE BOTTOM\*

The AEROSTREAM® is a submersible self-aspirating aerator for the treatment of wastewater in municipal and industrial sewage water treatment plants.



- **Power range from 4 to 75 kW**
- **Ready-to-use delivery (assembled and wired)**
- **Ease of handling**
- **Easy and stand-alone installation at the bottom of the tank, no need to empty the basin for installation**
- **Use up to a depth of 5 to 6 m for certain powers.**
- **Perfectly suited to variable level basins**
- **No aerosol formation and no sedimentation at the bottom**
- **IP68 motors**

*Submersible aerator*

## AIR DIFFUSER SKIDS

### FINE BUBBLE AIR DIFFUSERS - TURNKEY SOLUTION EASY INSTALLED

The Removable Aeration Skids introduce oxygen via fine bubble diffusers and reg basin depth. Modular units are ideal as an emergency oxygen supplement.

Our fine bubble skids are :

- Deliverable on site by truck in 24/48 hours
- Easy to install without emptying the basin
- Can be off-loaded with a forklift using the fork pockets or a crane using the lifting lugs
- Stackable and containerised reducing transportation cost and protecting the membranes.



- ***Stainless Steel Fine Bubble Aeration Grid***
- ***Composed of 56 Aquatube® diffusers 70-800mm long***
- ***Optimal airflow per manifold: 300-400 Nm<sup>3</sup>/h***
- ***Maximum airflow per manifold: 500 Nm<sup>3</sup>/h***
- ***Bubble size: 1 to 3 mm***
- ***Grid dimensions: 5m length x 2m width***

Surface aerator

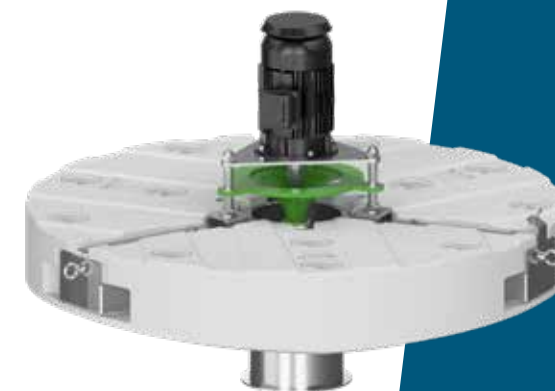
**AQUAFEN®**

## HIGH SPEED FLOATING AERATOR - AQUAFEN® ALLOWING AERATION AND MIXING OF THE EFFLUENTS

Specially designed to be floating, the AQUAFEN® turbine is adapted to all environments with great ease of installation and commissioning. The general hydraulics of the turbine have been optimized to ensure maximum effluent flow with a flat spray limiting the production of aerosols.

The Aquafen® allows:

- The mixing of the effluent to keep solid particles in suspension and ensure good homogenization of the liquid,
- The oxygen supply necessary to allow the development of the microbial flora which will be responsible for treating the effluent,
- To limitate bad odors in lagoons by reducing fermentation.



- **Power range from 4 to 75 kW**
- **Ready-to-use delivery (assembled and wired)**
- **Ease of handling**
- **Easy installation by simply mooring using fixing cables**
- **Ease of commissioning**
- **Perfectly suited for variable level basins**
- **IP56 motors, 1000 or 1500 rpm, energy class IE3**

Surface agitator

**EUROMIX®**

## HIGH SPEED FLOATING MIXER - EUROMIX® ALLOWING AERATION AND MIXING OF THE EFFLUENTS

EUROMIX® is a vertical shaft floating agitator designed for all mixing applications without oxygen supply.

The liquid is sucked from the surface of the basin and forced back to the bottom.

The Euromix flow guide allows the fluid to be channeled to the bottom of the basin and to reach great depths. The toric flow thus created ensures the mixing of the liquid. The general axis of the flow being vertical, no direction is preferred, this avoids the creation of dead zones sometimes encountered with submerged agitators. It thus prevents sedimentation and fast settling in the homogenization tanks.



- **Power range from 4 to 22 kW**
- **Ready-to-use delivery (assembled and wired)**
- **Ease of handling**
- **Easy installation by simply mooring using fixing cables**
- **Ease of commissioning**
- **Perfectly suited for variable level basins**
- **Very fast homogenization**
- **IP56 motors, 1000 or 1500 rpm, energy class IE3**

Foam control

FRED®

## PREVENT SETTLEMENT AND CRUST FORMATION AS WELL AS MIXING THE ENTIRE BASIN. APPLICABLE FOR VISCOUS + SLUDGE BULKING APPLICATIONS

Radial Aspiration and Mixing floatable material with downdraft flow and dual action impeller. The homogenization phase allows re-entrainment with the biological process.

FRED units prevent settlement and crust formation as well as mixing the entire basin. Nothing is discharged from the basin.

Applicable for Viscous + sludge bulking applications and grease trap systems upstream of biological reactor SBR.



- *Special Dual Action Impeller*
- *Excellent Mixing performance*
- *Reliable + non-clogging design*
- *Easy installation + removal*

Foam control

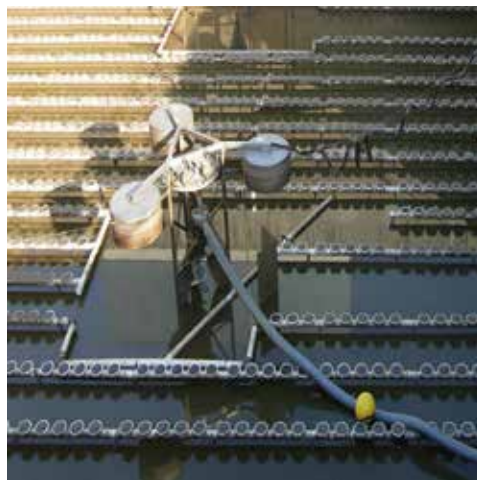
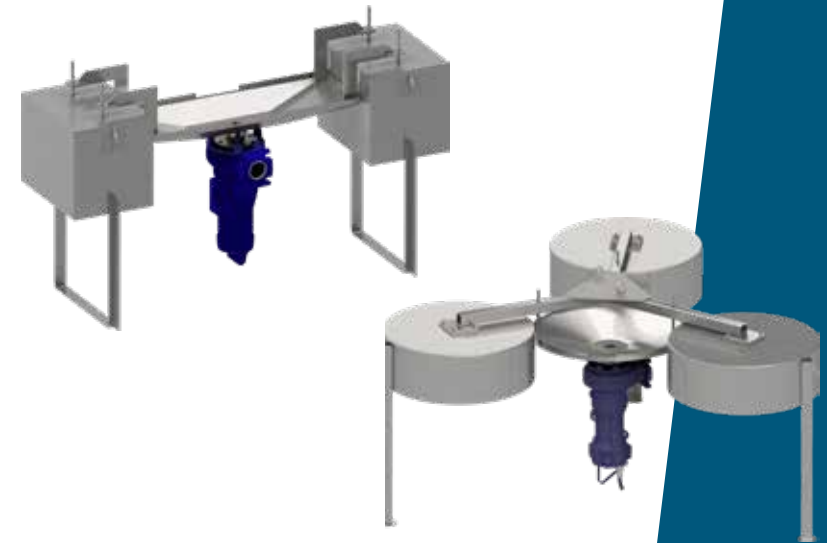
FRMD®

## FLOATABLES REMOVAL DEVICE

The FRMD is used to remove the upper layer of foam, oil or fats. The natural flow within the basin, together with the suction of the pump, attracts the surface of the water towards the center of the FRMD. An adaptable floating weir allows the upper layer to enter the pump and be removed from the basin. The weir and the submersible pump are mounted on a robust floating structure held in place by cables and springs or guiding tubes.

Depending on the application and the geometry of the basin, the FRMD can be mounted together with a MIX-SL (directional submersible mixer) or MIX-AS (floating downdraft mixer) to help the flow towards the weir.

Applicable for removal of oil, fats, bulking + aging sludge, recycling of scum in sludge stabilisation + biogas, SBR and ASP tanks.



- *Adjustable flow rates*
- *Special pump for mixtures of different liquids and air*
- *Easy installation and removal*
- *Easy use in ON/OFF mode or with a frequency drive*
- *Fixed or variable water levels*

Mixing

MIX-AS<sup>®</sup>

## PROVIDE INTENSIVE RADIAL, SUB-SURFACE MIXING PATTERN FOR VARIOUS PROCESS REQUIREMENTS ADAPTABLE TO MOST TANK CONFIGURATIONS

Open, two-bladed helical impeller providing intensive radial, sub-surface mixing pattern with minimal surface disturbance and extremely low power to volume performance.



- *General-purpose mixer adaptable to most tank configurations plus applications and easily positioned for various process requirements*
- *Simple, Robust, and Reliable*
- *Non-clogging, no sheering action impeller*
- *Virtually zero surface turbulence and no aerosols*
- *No O<sub>2</sub> transfer and easy to install and remove*

Mixing

MIX-SL®

FOR GENERAL MIXING AND FLOW GENERATION  
ADAPTABLE TO MANY TANK CONFIGURATIONS  
PROVIDING INTENSIVE, DIRECTIONAL  
SUB-SURFACE MIXING PATTERN

Multi-purpose, multi-directional, submerged mixer ideal for general mixing and flow generation; adaptable to many tank configurations. Open, dual helical impeller providing intensive; directional sub-surface mixing pattern with minimal surface disturbance and low power to volume performance.

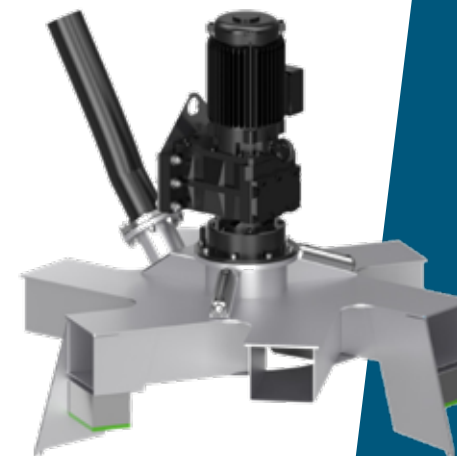


- **Submersible Motor - IP 68 protection**
- **High quality, low maintenance motor**
- **Robust + compact design - minimal vibration**
- **Easy installation + removal**
- **Directional Mixing + flow generation plus General mixing of lagoons**
- **Basins + tanks Activated-sludge processes very large surface area reservoirs**
- **Denitrification + SBR + ASP**

## SOFIE®

### SUBMERGED LOW SPEED AERATOR COMBINED WITH A TURBO BLOWER - SOFIE® ALLOWING AERATION AND/OR MIXING OF THE EFFLUENTS BY THE BOTTOM

The SOFIE® submersible aerator / agitator is a mixing unit not sensitive to clogging appropriate for difficult applications, which can function both as an aerator and as an agitator for wastewater treatment.



- **Power range from 4 to 37 kW**
- **Ready-to-use delivery (assembled and wired)**
- **Ease of handling**
- **Easy and stand-alone installation at the bottom of the tank, no need to empty the basin for installation**
- **Perfect for deep and variable level basins**
- **Suitable for continuous and intermittent operating processes**
- **Can be used as an aerator and / or mixer depending on process requirements**
- **IP68 motors**

Surface aerator

TLF®

## FIXED OR MOBILE AERATOR WITH ONE OF THE HIGHEST REAL YIELDS ON THE MARKET

Slow speed aerators used for aeration and mixing of urban and industrial wastewater in various processes.

Provided in either fixed bridge or floating designs.

Ideal for Aerating most types of wastewater or industrial effluents.

The TLF® Turbine Aerator is one of the most efficient aeration products in the marketplace.

Produces High Mixing and Homogenous Solutions in large lagoons and ASP tanks.



- **Significant power range from 1.5Kw to 200Kw (higher power on request)**
- **Maximum oxygenation efficiency and effective mixing**
- **Various material of construction for all types of applications**
- **Flexibility and customisation to meet the customer's requirements**
- **Reduced noise attenuation to meet local environmental requirements**
- **Low maintenance floating rotors**
- **Can be used in deep tanks and large lagoons**
- **One of the highest real returns in the market**

## OTHER EQUIPMENT FOR RENT



**High speed  
floating directional  
aerator/mixer**



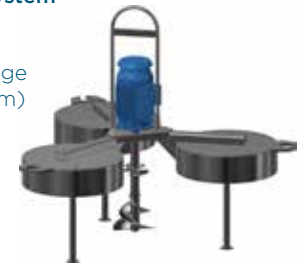
**Hydro-ejector**

**Agitator fixed on guide bar, metal  
frame or concrete block**



**Mobile aeration unit**

**Foam breaking system**  
(Designed to  
re-entrain fat and  
thick floating sludge  
layer at the bottom)



**Formic-acid cleaning system**  
(For unclogging fine bubble  
membranes)

# WORKSHOP



## INDUSTRIAL BOILERMAKING — ELECTROMECHANICS

**Welding / cutting / bending** (metal frame)

**Electromechanical** (works on the motors)

**Laboratory / test basins** (test, diagnosis, test column for diffusers)



# SPARE PARTS

2500m<sup>2</sup> of space dedicated to the management of spare parts and the manufacture of customized components for all water treatment plant equipment:

## SPARE PARTS FOR ELECTROMECHANICAL EQUIPMENT



**Brush aerators**  
Gearmotor  
Bearing  
Brush blade  
Etc.



**High speed aerators**  
Motor  
Propeller  
Screwpropeller  
Coupling  
Duct  
Rotoflector  
Float  
Etc.



**Low speed aerators**  
Gearmotor  
Polyester rotor  
Coupling sleeve  
Cowling  
Etc.



### SPARE PARTS FOR CLARIFIERS AND SEPARATORS (scraper bridge, suction bridge, degazer, degreaser)

Surface and bottom scraper, V-notched channel, scum box, slip rings, geared motor, wheel, ladder, mechanical or motorized brush, nozzle cleaning system, etc.



### SPARE PARTS FOR AERATION RAMPS — Fine and medium bubbles diffusers



AQUADISC 250



AQUADISC 320



AQUATUBE 70  
800 mm or 1150 mm



AQUATUBE 90



AIRCOMB

### SPARE PARTS FOR MOTORS AND GEARBOXES

Bearing / seal / flange / rain caps / customization of asynchronous motors for floating aerator.





Become a premium rental customer  
and get a privileged access to our online rental fleet



<div> <div> <div>PRODUCTS</div> <div>SERVICES &amp; RENTAL</div> <div>REFERENCES</div> <div>EUROPELEC</div> </div> <div> </div> <div> <div> <div> <div>Q</div> <div>☎</div> <div>✉</div> <div>EN</div> </div> </div> <div> <div>AQUATURBO</div> <div>NEWS</div> <div>ABOUT US</div> <div>DOWNLOADS</div> </div> </div> </div>						
RENTAL AVAILABILITY						
Category	Model	Power	Description	Availability	Location	Get a quote
Submersible aerators	AER-SB	22 kW	Self-aspirating bottom aerator – AER-SB – 22 kW – 1500 rpm	Available	Halle Belgium	Get Quote
Submersible aerators	AER-SB	22 kW	Self-aspirating bottom aerator – AER-SB – 22 kW – 1500 rpm	Available	Halle Belgium	Get Quote
Submersible aerators	AER-SB	30 kW	Self-aspirating bottom aerator – AER-SB – 30 kW – 1500 rpm	Available	Halle Belgium	Get Quote
Submersible aerators	AER-SB	15 kW	Self-aspirating bottom aerator – AER-SB – 15 kW – 1500 rpm	Reserved	Halle Belgium	
Surface aerators	AER-SL	22 kW	Surface aerator – AER-SL – 22 kW – 1500 rpm	Workshop	Halle Belgium	
Surface aerators	AQUAFEN	15 kW	Surface aerator – AQUAFEN – 15 kW – 1500 rpm	Available	Bregy France	Get Quote
Surface aerators	AQUAFEN	11 kW	Surface aerator – AQUAFEN – 11 kW – 1500 rpm	Available	Bregy France	Get Quote

A STEP AHEAD IN WATER TECHNOLOGY

[sfa-enviro.com](http://sfa-enviro.com)



[rental@sfa-enviro.com](mailto:rental@sfa-enviro.com)

